



BLUME LED
HYDROPONICS

Home growers deserve
a better lighting experience

Blume Product Family

FEATURES & BENEFITS

HOME GROWERS DESERVE A BETTER LIGHTING EXPERIENCE

Superior Light Distribution

Blume provides a balanced spectrum with more blues and greens than HPS while still leaning red with our "Blood Orange" spectrum. This allows us to deliver industry-leading efficiency and reliability that punches well above its weight class.

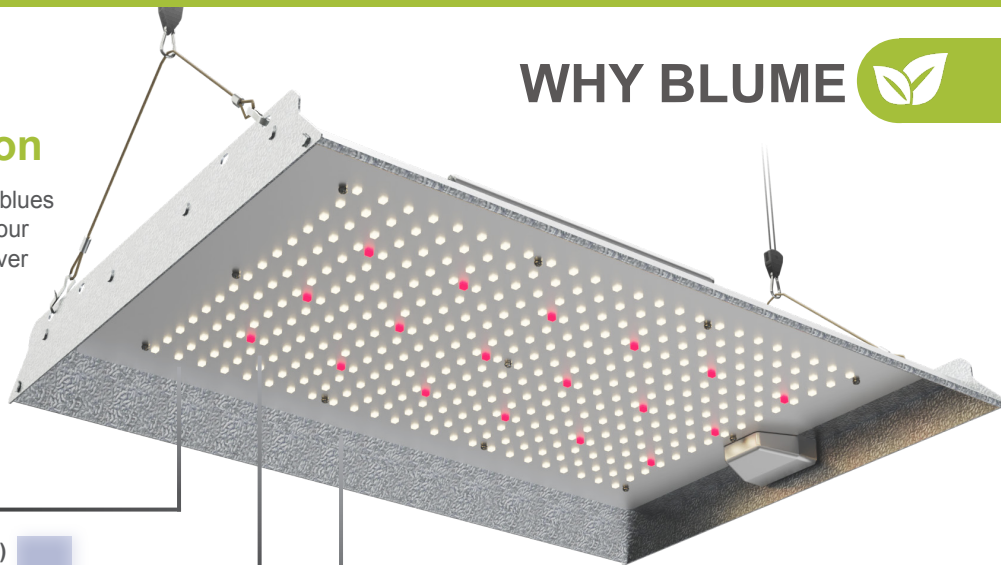
- ✔ More Uniform PPFD
- ✔ Absorb Light Better
- ✔ Produce Higher Yields

White Light (3,000K)
Boost Blooming

Blue Light (6500K)
Precise Growth

Red Light (660nm)
Higher Yields

WHY BLUME



Control the environment

Created by expert lighting designers with experience in the commercial landscape, Blume allows for safe and efficient growth longevity by offering market-leading hardware, superior efficiency, and longer life.

Dimmable Lighting:

- Ultimate Lighting Control
- Faster Plant Cycles
- Master the Growth Process

Certified:



Designed to last

Blume products are designed with reliability and longevity in mind. Every product within the Blume portfolio offers the highest quality components, providing growers with lighting solutions that excel in high temperatures and humid environments. Each product also includes a 3-year warranty to ensure reliability and peace of mind for many grows.

NOTE:

- Max Operating Temp: >100°F
- Humidity: IP65 Rated For Dust & Moisture



Operates In
High Heat



Wet & Humid
Applications



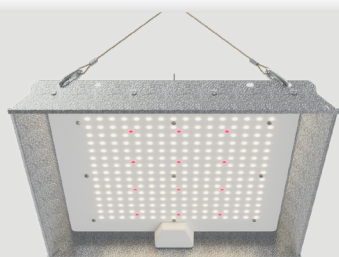
Long Life
+25,000 hrs

Blume Product family

Blume is a horticultural lighting manufacturer that provides experienced growers with lighting solutions created by experienced lighting designers. We aim to offer energy-efficient and long-lasting alternatives to traditional grow lights. Blume uses the latest in horticulture technology to engineer formulated light spectrums designed for maximal plant growth so growers can increase yields and maximize production.



HOME GROWERS DESERVE A BETTER LIGHTING EXPERIENCE



BL1000 SPECIFICATIONS

Dimension: 12 x 13 x 3 inches | 4lbs
Input Power: 100W
Input Voltage: 120-277 VAC
Max Operating Temp (F°/C): 0 - 104°F / -18 - 40°C
Dimmer: Knob Switch Dimming
Color Temperature: 3000K/6500K/660nm
B:G:R:FR: 15:37:46:2
PPF (400-700) (μmol/s): 220
Power Cord: 8ft
Lifetime: Q90: >25,000 hrs



BL1500 SPECIFICATIONS

Dimension: 18 x 13 x 3 inches | 5lbs
Input Power: 150W
Input Voltage: 120-277 VAC
Max Operating Temp (F°/C): 0 - 104°F / -18 - 40°C
Dimmer: Knob Switch Dimming
Color Temperature: 3000K/6500K/660nm
B:G:R:FR: 15:37:46:2
PPF (400-700) (μmol/s): 330
Power Cord: 8ft
Lifetime: Q90: >25,000 hrs



BL2000 SPECIFICATIONS

Dimension: 23 x 13 x 3 inches | 5.5lbs
Input Power: 200W
Input Voltage: 120-277 VAC
Max Operating Temp (F°/C): 0 - 104°F / -18 - 40°C
Dimmer: Knob Switch Dimming
Color Temperature: 3000K/6500K/660nm
B:G:R:FR: 15:37:46:2
PPF (400-700) (μmol/s): 450
Power Cord: 8ft
Lifetime: Q90: >25,000 hrs



REPLACE, INSTALL AND GROW

RECOMMENDED CROP SETTINGS

BL1000 SERIES

Suspension Height: 12inch

CANNABIS*

- Power Setting: 100%
- Grow Foot Print: 3x3 ft

SEEDLING

- Power Setting: 60%
- Grow Foot Print: 3x3 ft

MICROGREENS

- Power Setting: 40%
- Grow Foot Print: 3x3 ft

BL1500 SERIES

Suspension Height: 18inch

CANNABIS

- Power Setting: 100%
- Grow Foot Print: 3x3 ft

SEEDLING

- Power Setting: 60%
- Grow Foot Print: 3x3 ft

MICROGREENS

- Power Setting: 40%
- Grow Foot Print: 3x3 ft

BL2000 SERIES

Suspension Height: 18inch

CANNABIS

- Power Setting: 100%
- Grow Foot Print: 4x4 ft

SEEDLING

- Power Setting: 60%
- Grow Foot Print: 4x4 ft

MICROGREENS

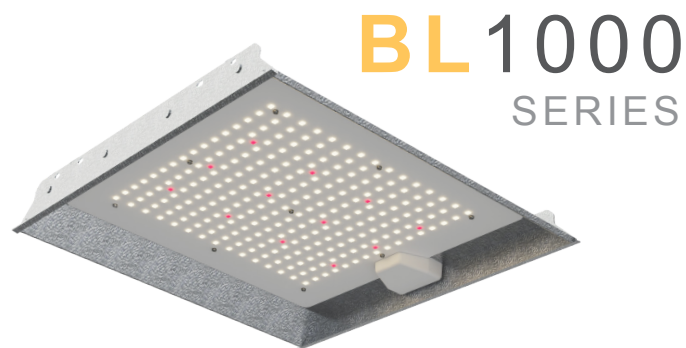
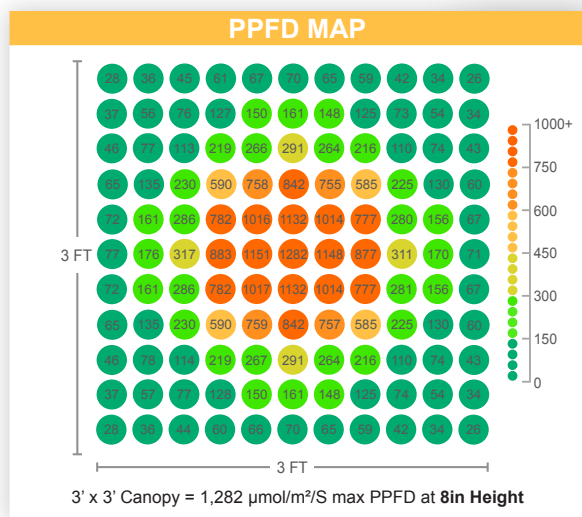
- Power Setting: 40%
- Grow Foot Print: 4x4 ft

*Note: BL1000 Series recommends two light sources for optimal cannabis yield.

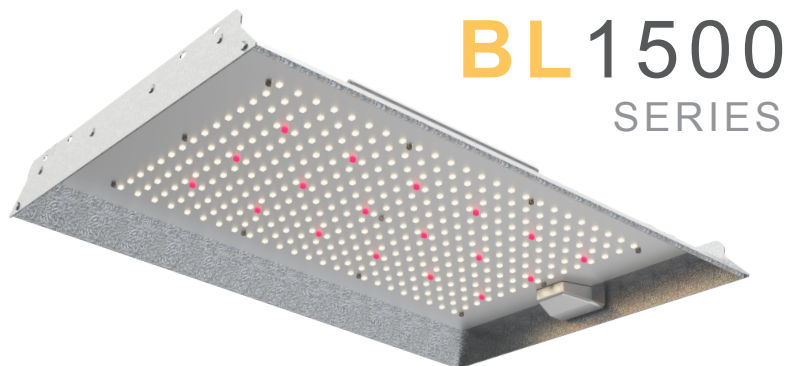
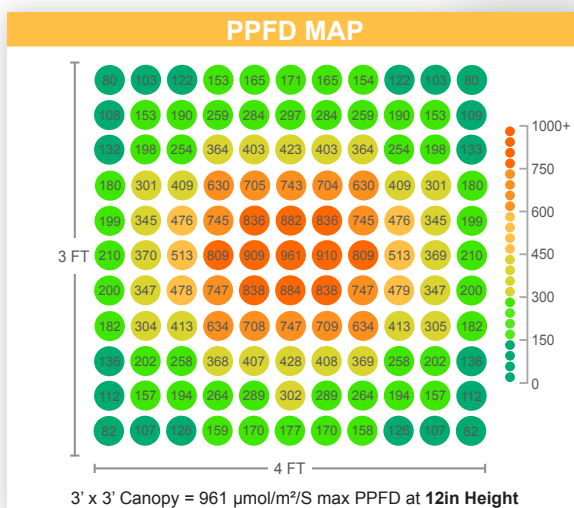
Blume Product Family

PPFD MAPS

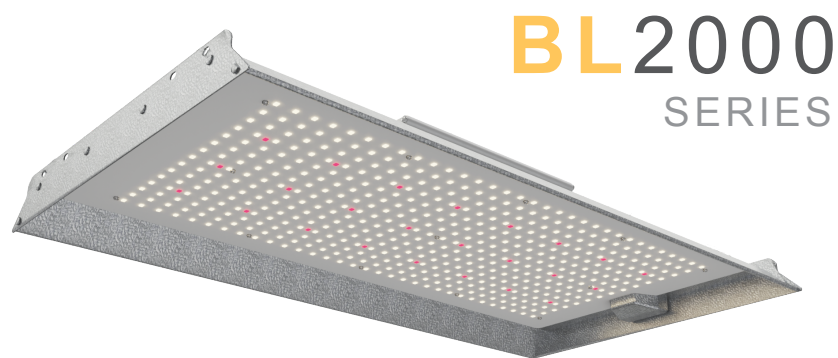
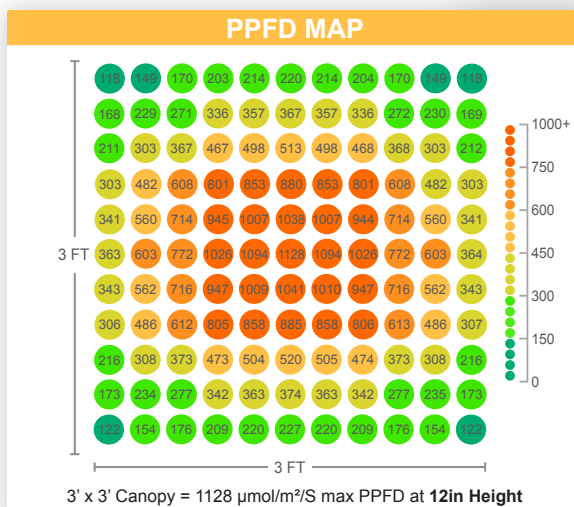
HOME GROWERS DESERVE A BETTER LIGHTING EXPERIENCE



GROWING ZONE
BASED ON 3X3 TENT



GROWING ZONE
BASED ON 3X3 TENT



GROWING ZONE
BASED ON 3X3 TENT

SPECTRA DESIGNED FOR HIGH GROWTH

Our Powerful Blood Orange Spectrum:

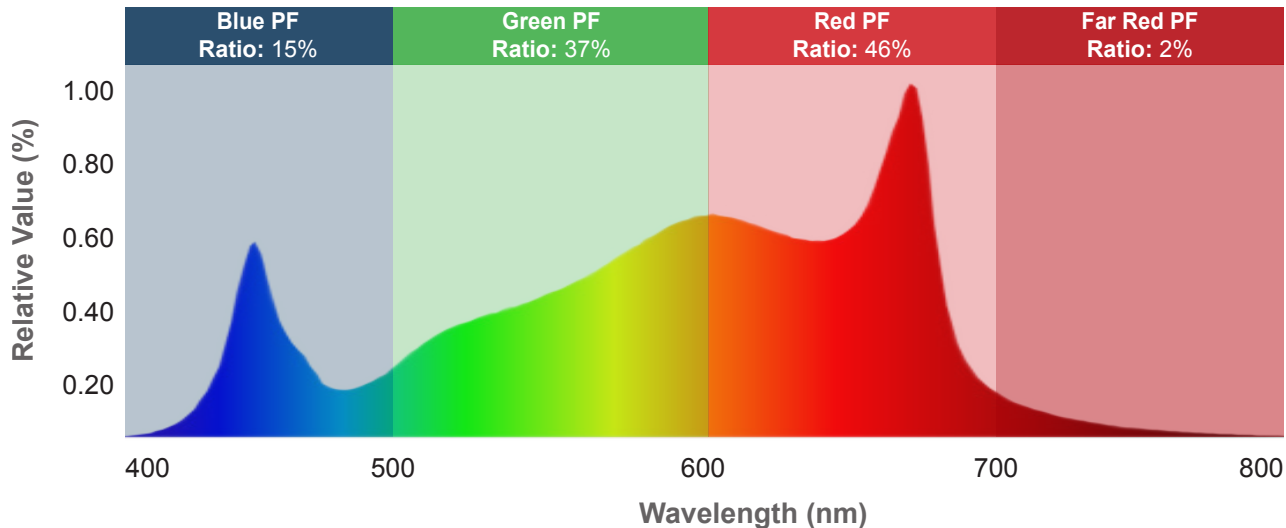
- Optimizes plant growth and photosynthesis
- Supports biomass and metabolite production
- Encourages full leaf size response for more robust growth
- Promotes plant structure and leaf mass



200W
Standard
LED Fixture

200W
Blume Fixture with
Blood Orange Spectrum

Spectral Quantum Distribution



Blood Orange Spectrum

Thanks to our full-spectrum white LEDs, Blume provides a balanced spectrum with more blues and greens than HPS while still leaning on reds to allow for an industry-leading efficiency of up to 2.30 $\mu\text{mol}/\text{joule}$.

BLUME LED

HYDROponICS

A Division of

FRANKLIN



Scan Here or Click
Here to learn more.

www.fslled.com

All trademarks are the property of their respective owners. Information provided is subject to change without notice. All values are design or typical values when measured under laboratory conditions. Blume Hydroponics. © 2021.